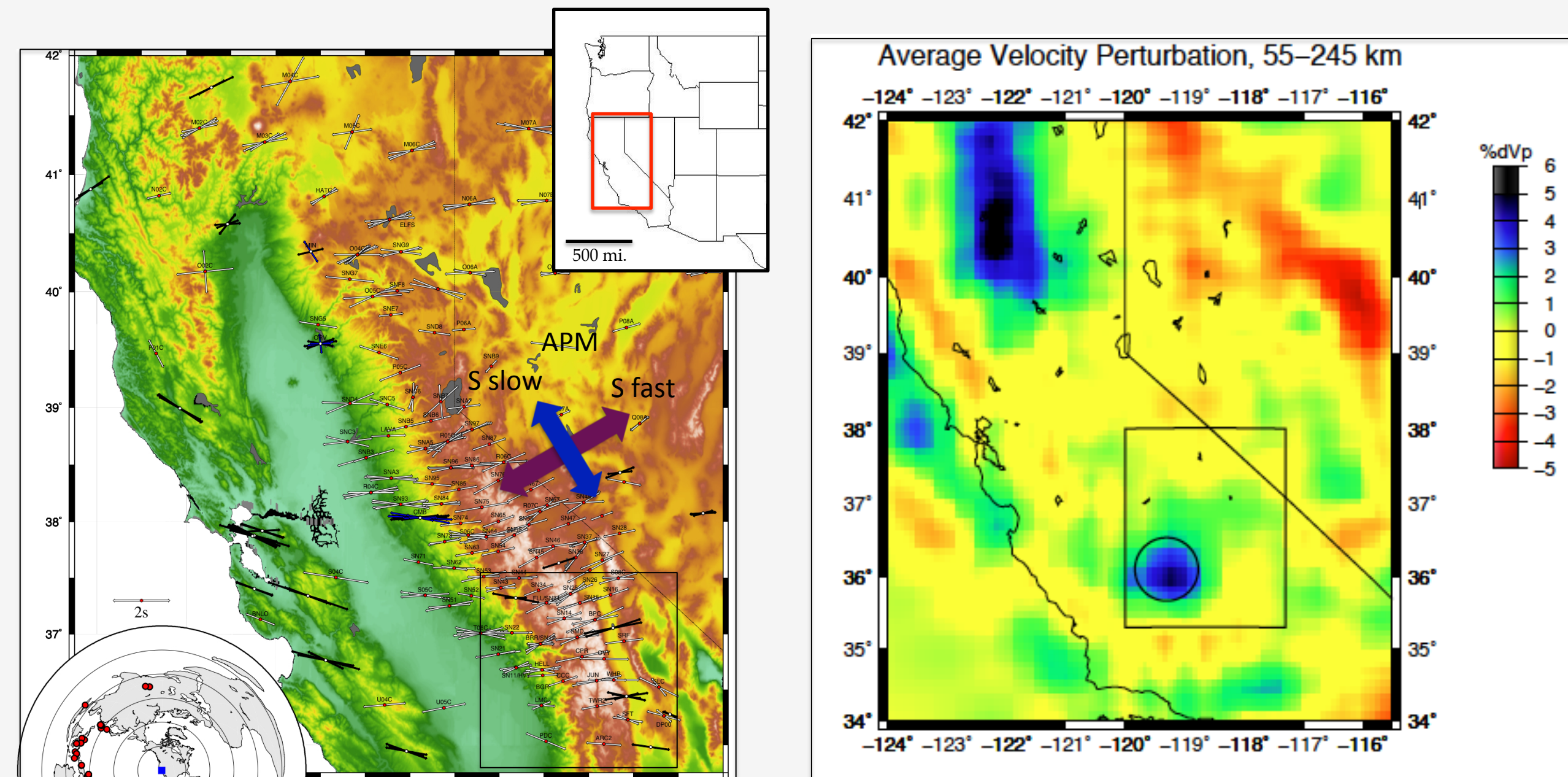


Introduction

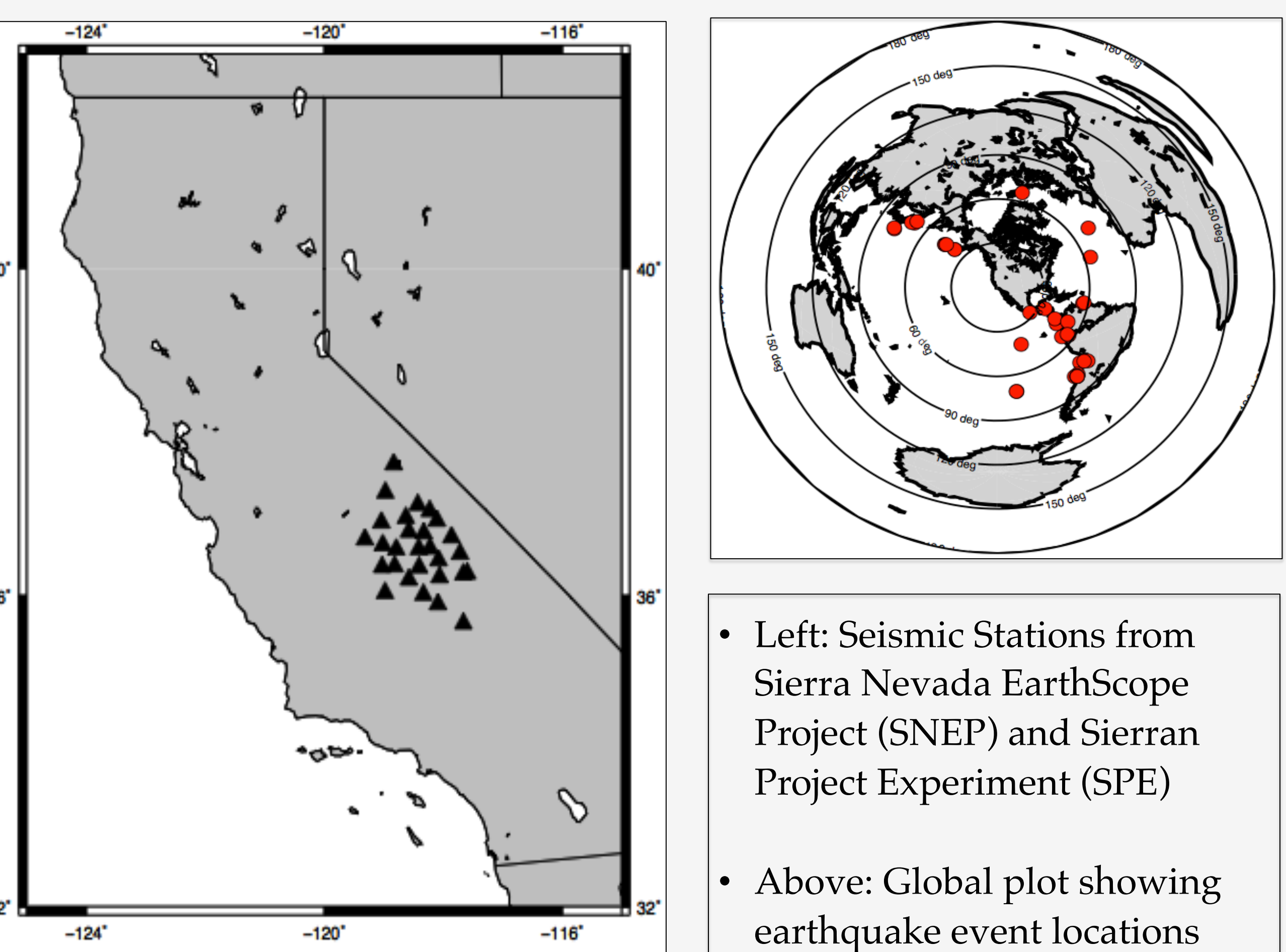
- Previous work has supported that the Sierra Nevada batholith has experienced crustal thinning by removal of the dense underlying root.
- Felsic crust, elevation reinforcement, and the connection of the missing root with the high wave speed Isabella Anomaly are controversial.
- Absolute plate motion (APM) is thought to be the cause of anisotropy
- Depth of anisotropy under the southern Sierra Nevada is unknown from previous SKS data (Bastow et al., 2007).
- Suggested removal processes in the Sierra Nevada provides constraints on continental crust formation (Boyd et al., 2004).



- Left: Arrows indicating SKS fast direction (Bastow et al., 2007)
- Right: Average upper mantle velocity (Jones et al., submitted). Blue area within the box is the Isabella Anomaly

Methods

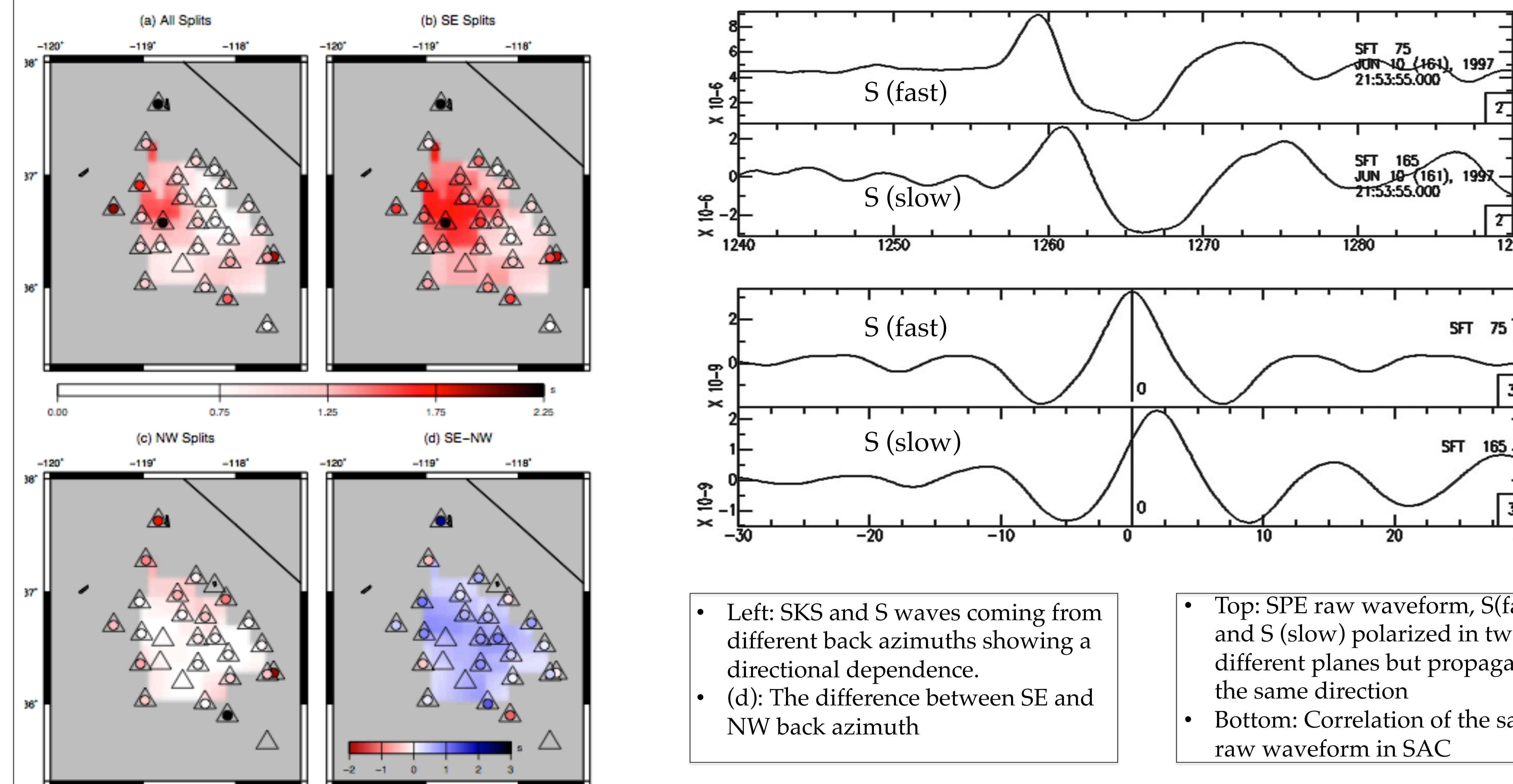
- Cross-correlation of split teleseismic shear waves with varying back azimuth and station-event distance.
- Known fast and slow planes from previous SKS analysis (Bastow et al., 2007), seismic data are rotated to N75E/N15W
- Cross-correlations done with Seismic Analysis Code (SAC).
- “Pauper’s Tomography” (Jones et al., 1994) to back project down the ray path to find depth



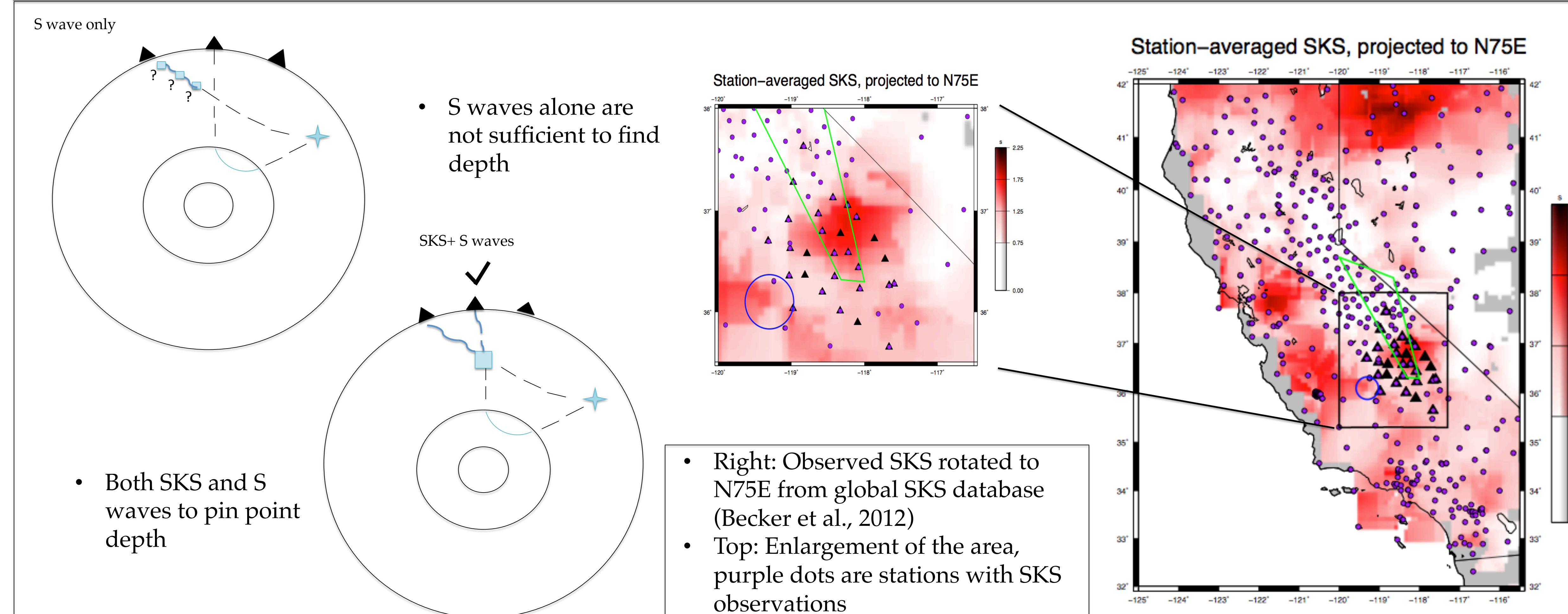
- Left: Seismic Stations from Sierra Nevada EarthScope Project (SNEP) and Sierran Project Experiment (SPE)
- Above: Global plot showing earthquake event locations

Results

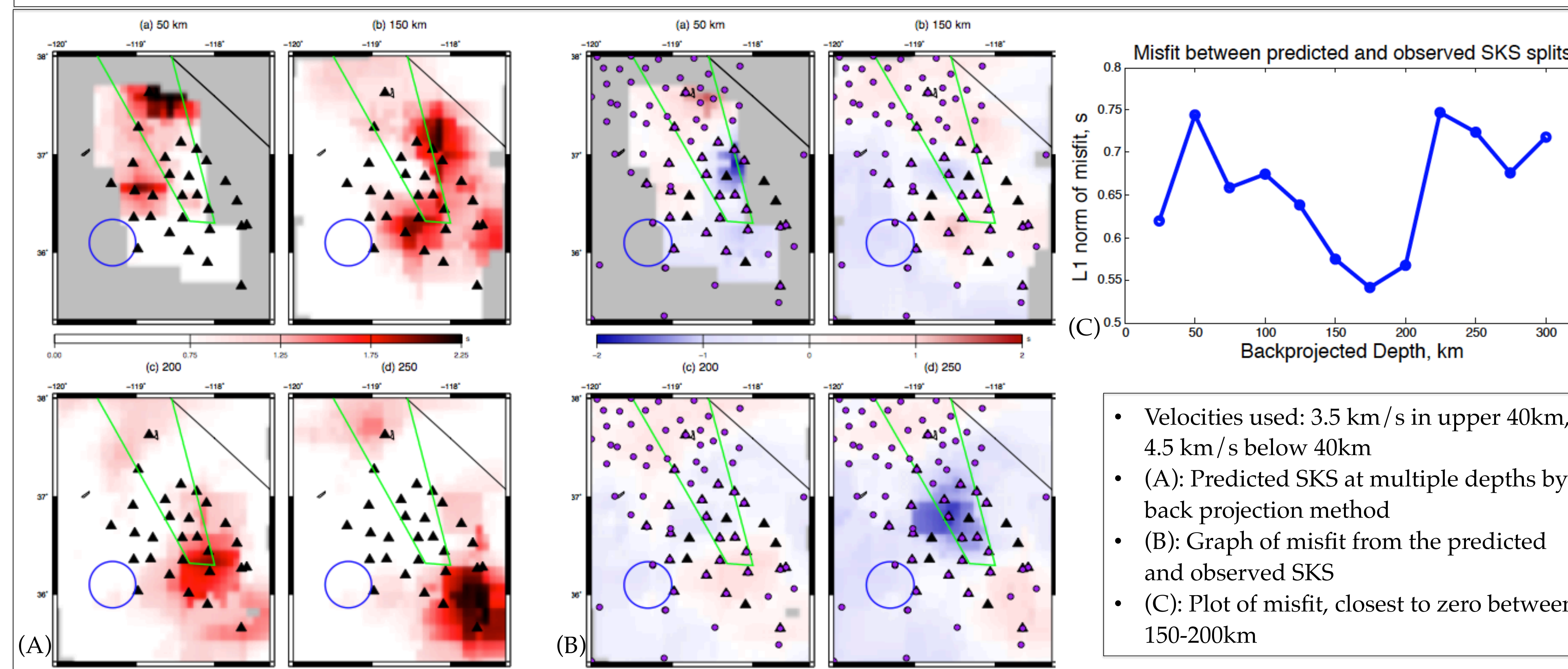
- Picks of S-fast/S-slow lag times for 260 split waveforms from 15 events recorded at 27 seismic stations.
- The lag times (up to 3.25 s) from the fast (N75E polarized) and slow waves are recorded for each waveform pick.
- Null (52 less than 0.5 s) and negative (16) splits were allowed, but the coordinate system was fixed.
- Anisotropy depth 150-200km



- Left: SKS and S waves coming from different back azimuths showing a directional dependence.
- (d): The difference between SE and NW back azimuth
- Top: SPE raw waveform, S (fast) and S (slow) polarized in two different planes but propagating in the same direction
- Bottom: Correlation of the same raw waveform in SAC



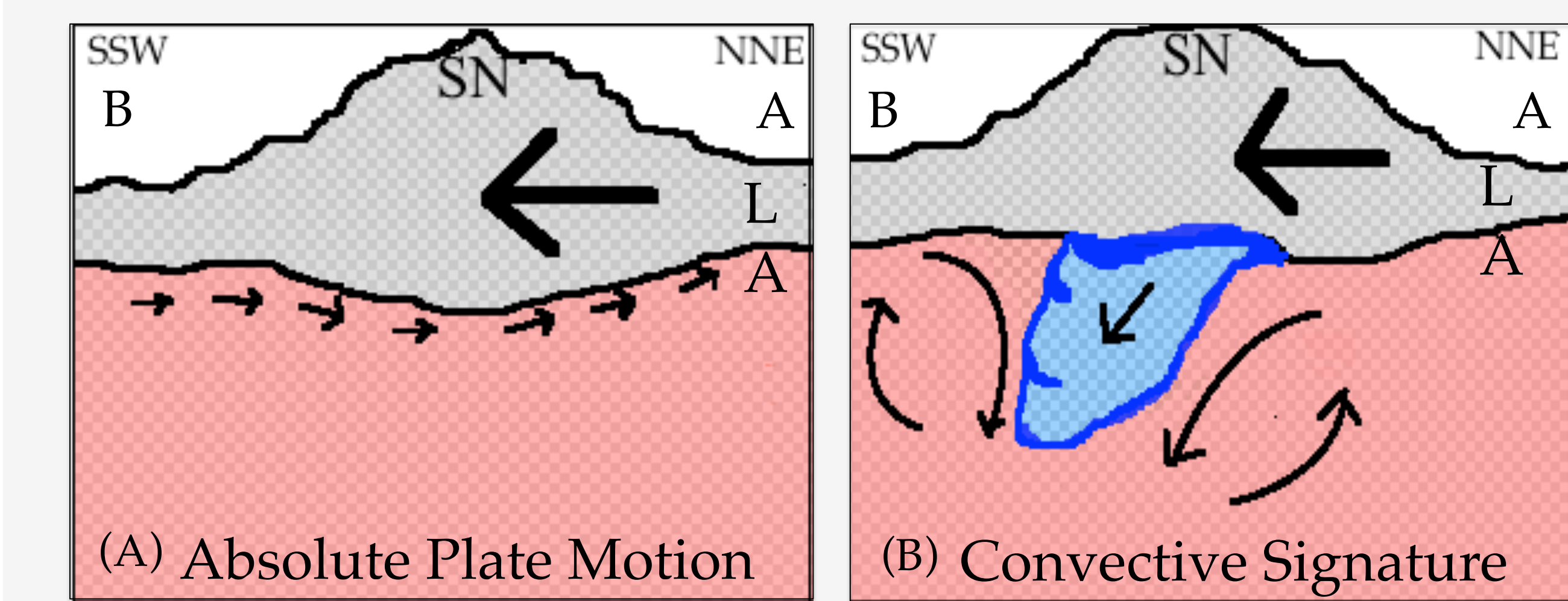
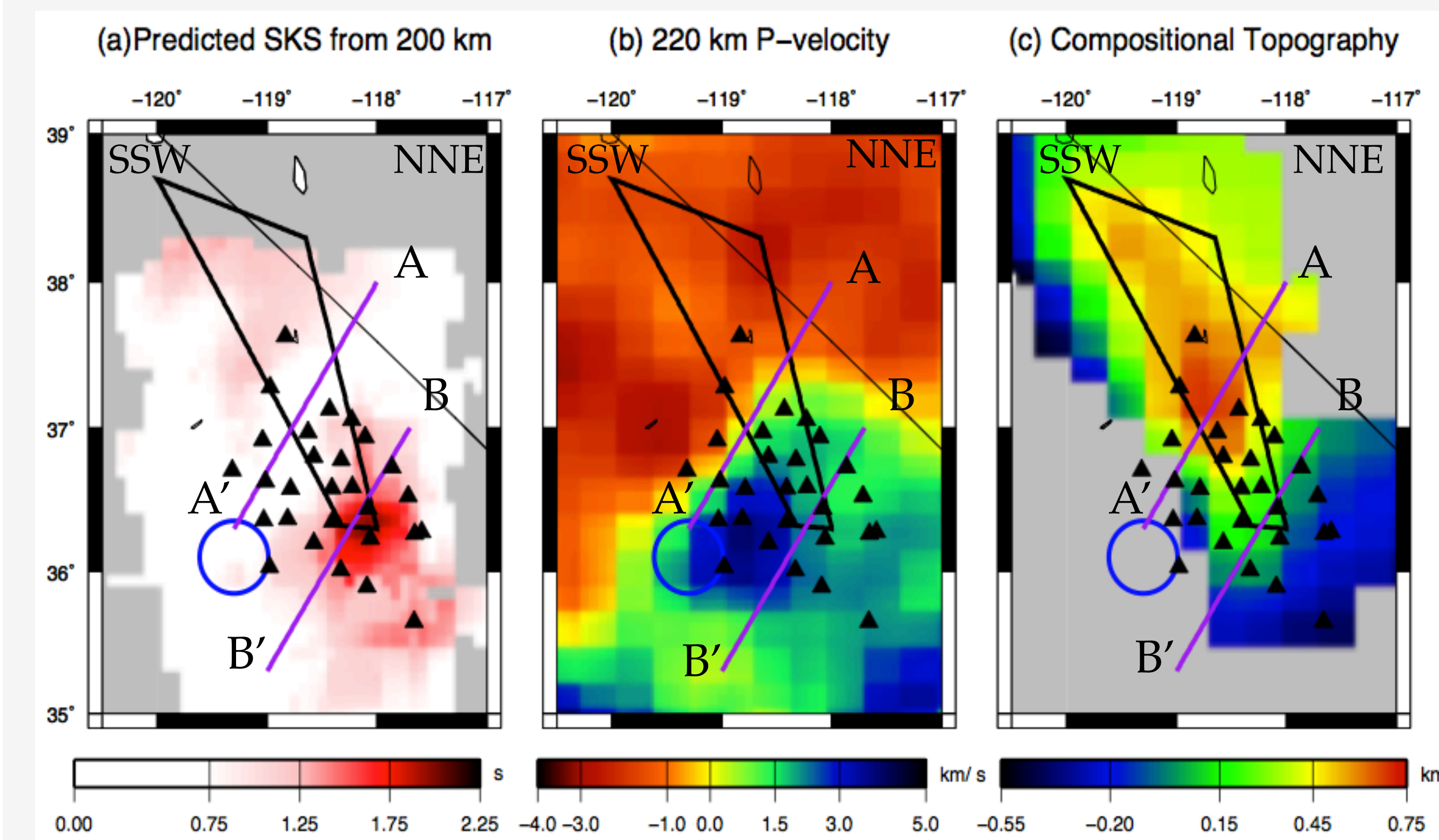
- Both SKS and S waves to pin point depth
- Right: Observed SKS rotated to N75E from global SKS database (Becker et al., 2012)
- Top: Enlargement of the area, purple dots are stations with SKS observations



- Velocities used: 3.5 km/s in upper 40km, 4.5 km/s below 40km
- (A): Predicted SKS at multiple depths by back projection method
- (B): Graph of misfit from the predicted and observed SKS
- (C): Plot of misfit, closest to zero between 150-200km

Discussion

- S (fast)/S (slow) wave tomography and cross-correlation methods effectively imaged depth of anisotropy under the Sierra Nevada.
- Anisotropy depth (asthenospheric) supports two hypotheses
 - Regional anisotropy dominated by APM
 - Sinking of dense, mafic root from south-central Sierra toward Isabella Anomaly.



- Top: Comparisons among the SKS data, P-wave velocity and compositional topography (Levandowski et al., 2013)
- Bottom: Cross sections of two interpretations. (A) Anisotropy caused by absolute plate motion (APM) (B) Anisotropy caused by sinking of dense root

Conclusion

- APM (~WSW-ENE) dominated flow disrupted by a ~100 km wavelength NNE-SSW trending zone from south-central Sierra to Isabella Anomaly
- Suggests that Isabella Anomaly is dense lower crust and mantle lithosphere removed from beneath Sierra Nevada
- Remaining felsic crust may be a microcosmic explanation for global continental-oceanic crustal composition dichotomy

Literature Cited

- Bastow, I., Owens, T., Badger, N., Zandt, G., Jones, C., Gilbert, H. (2007). 533B-1956 Shear wave Anisotropy Beneath the Sierra Nevada: Implications for Lithospheric foundering and Upper Mantle flow. *American Geophysical Union*.
- Becker, T.W., Lebedev, S., Long, M.D., (2012). On the Relationship between Azimuthal Anisotropy from Shear Wave Splitting and Surface Wave Tomography. *Journal of Geophysical Research*, 117
- Boyd, Oliver S., Jones, C., Sheehan A. F., (2004). Foundering Lithosphere Imaged Beneath the Southern Sierra Nevada, California, USA. *Science*, 305, 660
- Jones, C.H. et al., 2013, submitted to *Gosphere*
- Toomey, D. R. (1998). Mantle Seismic Structure Beneath the MELT Region of the East Pacific Rise from P and S Wave Tomography. *Science*, 280(5367), 1224-1227. doi:10.1126/science.280.5367.1224
- Levandowski, W. et al., (2013) Seismological Estimates of Means of Isostatic Support of the Sierra Nevada, submitted to *Gosphere*

Acknowledgements

- Many thanks to:
- UNAVCO RECESS and NSF
 - Dan Zietlow, Justin Ball, and Dr. Anne Sheehan
 - Hannah Grist, Peter Shellito and Rolf Norgaard